



Joniece Frank, Ceramic Artist, modeling a piece of fine sculpture.

FRANKOMA POTTERY *for 1972*



PLAINSMAN PATTERN pictured in Desert Gold. (See page 21 for listing of additional pieces and colors available in this pattern.)



LAZYPONES PATTERN pictured in Prairie Green. (See page 17 for listing of additional pieces and colors available in this pattern.)



WESTWIND PATTERN pictured in Woodland Moss. (See page 15 for listing of additional pieces and colors available in this pattern.)



WAGON WHEEL PATTERN pictured in Desert Gold. (See page 19 for listing of additional pieces and colors available in this pattern.)

Why Frankoma-?

FRANKOMA POTTERY has rightfully earned its position as America's outstanding creators of "useful and beautiful" earthenware. The colors, textures and crafted designs are created at Frankoma, and are unique in American ceramics.

Archeologists say that the Great Southwest was the cradle of the American Indians' culture. As the various tribes dispersed in all directions, their art and potting developed according to the materials and inspirations at hand. Most Indian tribes made pottery of some kind because of the universality of clay, and the ease with which it could be prepared and fashioned into so many useful items.

All tribes of the Southwest were potters, producing grain storage jars, water pots, serving bowls, pitchers, plates and such pieces as they needed to store, prepare and serve their food. Ceremonial objects, including sculptured figures, handled pots and bowls were common. Their decorations were slip painted earthen colors, applied with a brush, or incised designs. Their motifs were taken from daily surroundings — animals, plants, flowers, trees, clouds, hills, weapons, figures, etc.

Our pottery of today differs very little from theirs regarding materials, inspiration and uses. While they were limited as to firing methods and refinement of raw materials, we have added glazes and controlled temperatures and developed complex body compositions. But our common uses for pottery are the same — for the preparation, storage, and serving of foods. Naturally, we have enlarged our scope of uses—flower containers, decorative tile, lamps and other art objects germane to our modern homes.

"Pottery" has been refined, and developed in so many directions that one's selections of dishes, for example, becomes one of discrete choice according to the mode of living one chooses. America's conception of Freedom and Free Enterprise makes it possible for all classes and strata of its people to select a "dinnerware" or "tableware" from these general classes:

Pottery	China	Porcelain
Earthenware	Fine China	
Glass — as well as countless other materials.		

Frankoma entered the field of ceramics in 1933, utilizing the heritage left it by its predecessors, the Southwest Indians, by choosing POTTERY as its field of endeavor. Our aim was to combine the traditional art of the Indians, the spirit of the American pioneer and the creative tendencies of the youth of the Great Southwest, and mold them into good pottery forms.

John Frank, originator of "Frankoma," came to Oklahoma from Chicago in 1927. His teaching Art and Pottery at the University of Oklahoma and his work with the geological survey — unearthing Oklahoma clay deposits — brought together valuable material for his future venture of "potting." The natural inspiration of the Indians and the opportunities in the new state that had never had a pottery was too much of a challenge to let pass. In 1933 he started a "studio" pottery in Norman, Oklahoma, — equipped with one small kiln, a butter churn for mixing clay, a fruit jar for grinding glazes and a few other crude tools and tables. Help was easy to get in 1933, but it was still necessary to continue teaching until enough ware was produced to prove that

a product could be made of Oklahoma clays that was a contribution to Art and Ceramics and still saleable — at a profit.

Resigning his teaching in 1936 he and his wife, Grace Lee, set out on a venture of creating beautiful pottery for everyday living. They felt the need of using Oklahoma clays, if possible, for Oklahoma's first pottery. First a clay from Ada was used, then in 1954 a red burning clay dug at Sapulpa became the basis for all Frankoma ware. In 1938 the "studio" grew into a small factory as it moved from Norman to Sapulpa, where it is now.

Frankoma chose to stay as a "pottery" as it grew, and demanded of itself to make as fine a pottery as could be made considering the limitations of its materials. This means constant research to take advantage of raw materials and processes as they are brought to light.

Pottery enjoys so many advantages over the more "refined" and delicate ceramic wares. Frankoma pottery is manufactured by its unique once-fired process — clay body and colored glaze are fused and fired at the maturing point of the clay, and tempered as it slowly cools. It can be used "indoors — outdoors" because of its ruggedness and durability. It can really "take" the handling of every day use. It is ovenproof and food can be served in the same dish in which it is baked or prepared.

Color is such an indispensable part of today's decor — and nothing allows the wide range of colors and textures in ceramics as pottery. Eating from lovely textured and beautifully colored dishes is a fascinating experience. Some colors such as the "Rutile Art Glazes" which have identified Frankoma's unique tableware around the world, can only be produced on colored earthenware clays. By applying these unique glaze colors in various thicknesses according to pattern and design, the red body shows through the glaze giving a beautiful mottled effect when fired.

No ceramic product seems so close to the artists as pottery — so much so that one can almost trace the potter's fingerprints as he originally formed the body, lips, handles, and designs of a piece. This is an important consideration with Frankoma, for we are artists first, and clay is only the medium of expression.

The uses to which pottery can be put are myriad. Serving bowls double for baking or cobbler dishes, open bowls and platters can be used for hot rolls or upside-down cakes, or keeping the barbecue hot in the oven until ready to serve. Many table service pieces double for table centerpieces or a whole Mexican main course can be served in one. The chop plate can also hang as a wall plate. Pottery keeps foods or drinks hot so much longer than other materials.

Frankoma with its modern plant and latest equipment has been able to maintain its very popular price range in the face of higher materials, taxes and labor costs and the influx of foreign goods; yet, it maintains the original concept that made it accepted as a standard of fine "Pottery" — "every piece should be both useful and beautiful and be a contribution to both art and ceramics." We will continue to do just that, so that every piece will add to your daily pleasure of casual living.

Frankoma Christmas Memorial Plates



1965
"Good Will Towards Men"



1966
"Bethlehem Shepherds"



1967
"Gifts For The Christ Child"



1968
"Flight Into Egypt"



1969
"Laid in a Manger"



1970
"King of Kings"



1971
"No Room in the Inn"

These Past Issues No Longer Available From Factory

In 1965, John Frank, Artist and Founder of Frankoma Pottery, started the modeling of an annual Christmas Plate. They were inspired by the Christmas story and the fact that the life of Christ has been the inspiration of more "Art" in all of its mediums, than any one subject in the history of the world. This subject matter, compositions, and resources are unlimited. A self imposed demand was that every plate should have a scriptural background for each years renderings. No other pottery to our knowledge has attempted such an annual commemorative plate in the history of America.

They are done in low relief, with sharp enough detail, and sufficient good modeling as to make each plate a treasured piece of **sculpture**, as well as tell a story relative to Christmas time and the life of Christ. They are done only in a semi-translucent "Della Robbia" white glaze. The plate is 8½ inches in diameter; the master mold is signed by Mr. Frank and copyrighted. The production is limited to those that are

actually sold up till about the 10th of December. The master mold is destroyed on Christmas eve, and there are none made after that—neither are any made for stock or sale after Christmas. Naturally the edition is limited to that year.

These plates are introduced in early spring and only sold through Frankoma Pottery dealers, for it was created as a bonus for their participation and selling Frankoma Pottery. Over 4,000 accounts in all 50 states, as well as Grace Lee's Frankoma Pottery Shop at the plant, handle the plates. We have tried to keep the price very reasonable so that more people can afford to own them, collect and enjoy them.

We hope they will be a spiritual inspiration and reminder of the lasting values of the scriptures, and a blessing to all those who possess them.

John Frank, Ceramic Artist
Founder and Creator
Frankoma Pottery



21-8" FREE FORM VASE-2.00



302-CANDLE VASE-1.50



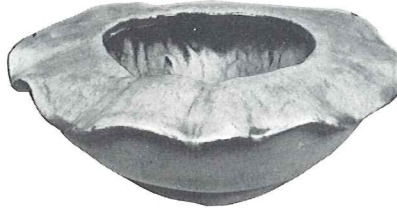
26LC-6 OZ. TUMBLER VASE-1.50



235-6" FLOWER ARRANGER-2.00



39-6" TRIANGLE PLANTER-2.00



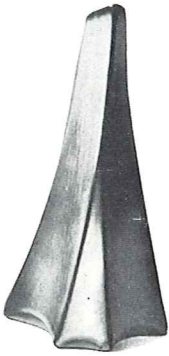
238-9" FREEFORM BOWL-2.50



F55-17" WINE BOTTLE-3.50



46



41

9" BUD VASES-1.50



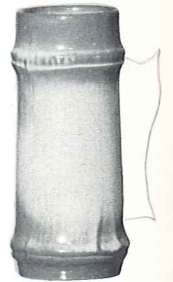
237-9" POD VASE-3.00



56-7" CORNUCOPIA VASE-2.00



7JH-9" BOTTLE VASE-WITH LID-2.00



T2-6 1/2" BAMBOO VASE-1.25



31-6" BUD VASE-1.00



32-4" BUD VASE-1.00



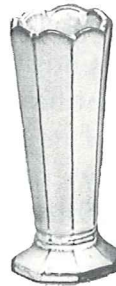
20-6" BUD VASE-1.25



28-6 1/2" BUD VASE-1.25



43-8" BUD VASE-1.25



38-6" OCTAGONAL BUD VASE-1.25



DISCONTINUED



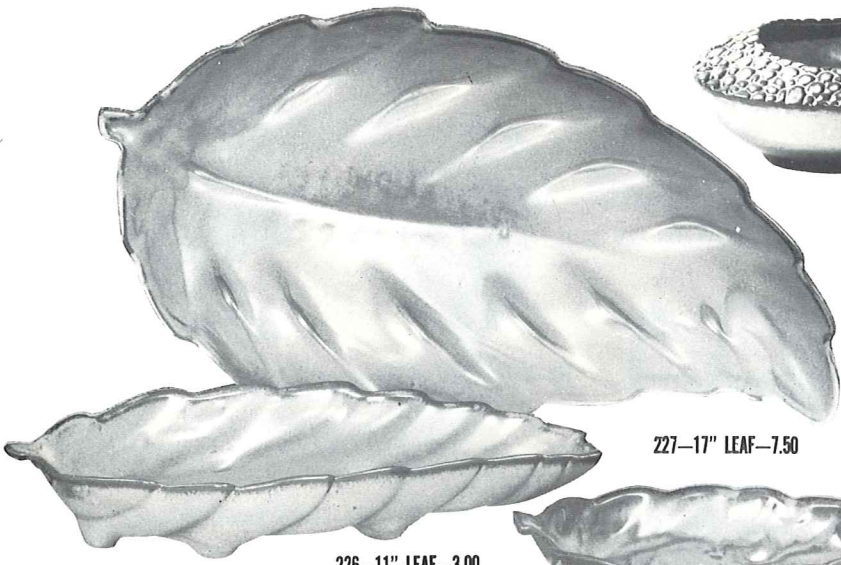
DISCONTINUED



72-10" RINGED CYLINDER-3.00



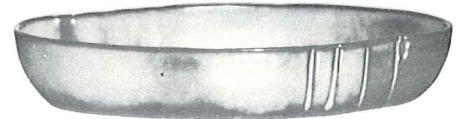
70-8 1/2" RINGED JARDINIERE-5.00



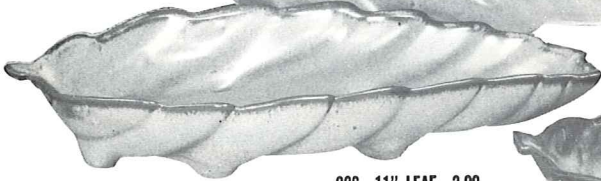
231A-11" BOWL-3.00



201-9" BOWL-2.00

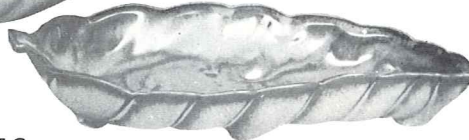


205-10" BOWL-2.00



226-11" LEAF-3.00

227-17" LEAF-7.50



225-7" LEAF-1.50

LEAF BOWLS



306-TRIPLE CANDLE HOLDER-3.00 PR.



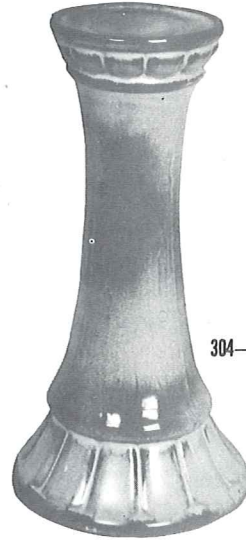
304-DOUBLE CANDLE HOLDER-2.00 PR.



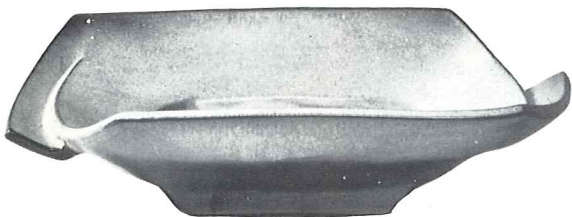
F88-15" SHALLOW BOWL-3.50



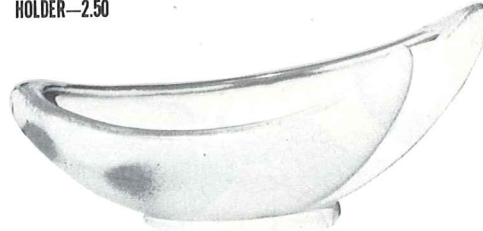
311-4 1/2" CANDLE HOLDER-2.50



310-10" CANDLE HOLDER-4.00



241-13" BOWL-4.50



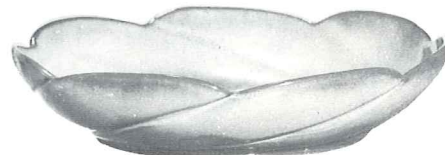
211-12" CRESCENT BOWL-3.50



305-SINGLE CANDLE HOLDER-2.00 PR.



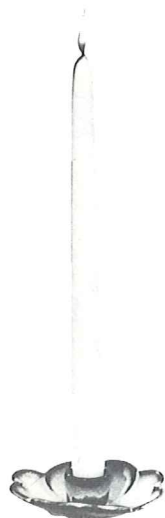
240-15" FREEFORM BOWL-4.50



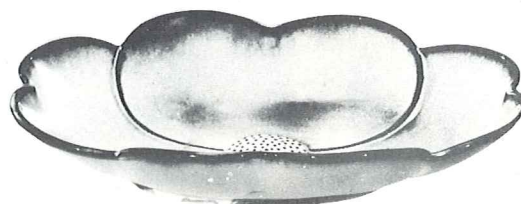
218-12" SCALLOPED BOWL-3.50



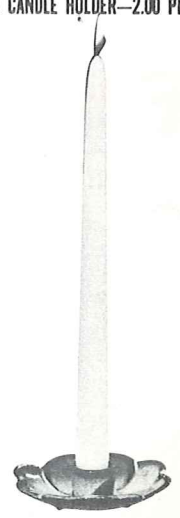
214-12" BOWL-2.50



300-DOGWOOD CANDLE HOLDER-2.00 PR.



200-12" DOGWOOD FLOWER BOWL-4.00



Appropriate Containers For Beautiful Flower Arrangements



6-7" FREE FORM VASE—2.50



35-6" FOOTED BOWL—1.50



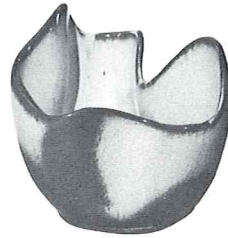
190-6" WALL VASE—1.25



23A-6" SQ. PEDESTAL VASE—3.00



F34-8" RICE BOWL—2.00



F29-6" DRAPERY VASE—2.00



F35-7" PEDESTALLED VASE—2.00



57S-6" CORNUCOPIA—1.50



59-6 1/2" CANTEEN—2.50



F33-7" FLUTED PLANTER—2.00



F52-7" PEDESTALLED URN—3.00



OLD FASHIONED PITCHER SET
F30A-5 1/2" PITCHER—2.50
F30B-7" BOWL—1.50



40A—SMALL PITCHER—2.00
40B—BOWL—1.25



37-4" HEXAGONAL PLANTER—1.25



4N-8" BOWL—1.50



234-FOOTED FREE FORM BOWL—2.00



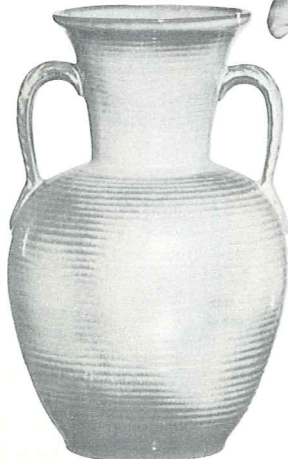
222-12" CORNUCOPIA—3.50



65-8" HEXAGONAL VASE—2.00



19-7" FAN VASE—2.50



71-10" LEAF HANDLED VASE—3.50



215-15" CORNUCOPIA—10.00



22S-5" FOOTED ROUND VASE—1.25



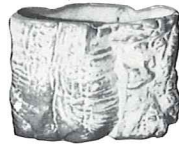
22-7" FOOTED ROUND VASE—2.00



52-8" URN—3.50



203-10" CACTUS BOWL-2.50



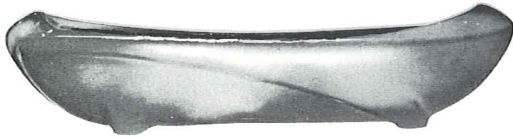
B3-4" CORK BARK PLANTER-1.25



T7-4" COCONUT PLANTER-1.25



4M-18 OZ. MUG-1.80



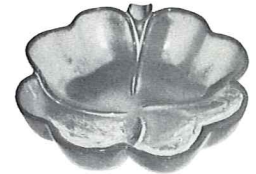
45-12" OBLONG PLANTER-2.00



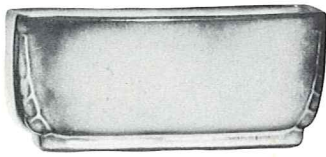
433-PLANTER BOOT BOOKENDS-7.00 PR.



133-6 1/2" BOOT-2.00
134-4" BOOT-1.00



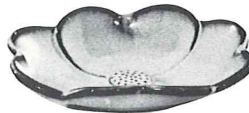
223-6" FOUR LEAF CLOVER-1.25



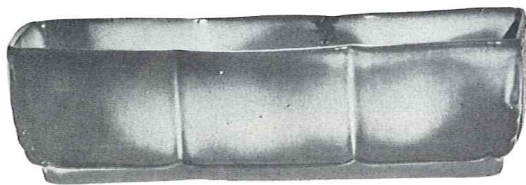
14-8" PLANTER-1.50



T9-7" SHELL BOWL-2.00



204-6" DOGWOOD TRAY-1.25



15-12" PLANTER-3.50



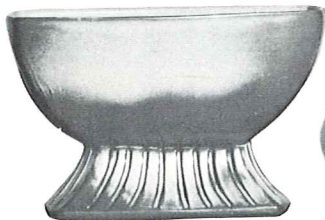
224-8" ROUND BOWL-2.00



473-6 1/2" SHELL TRAY-1.25



64-9" OCTAGONAL VASE-2.50



17-8"x3" PLANTER-2.00



212-8" ROUND BOWL-2.00



803-HONEY JAR W/LID-2.00



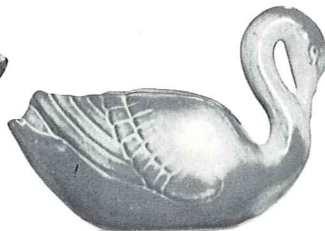
913-9" DUTCH SHOE PLANTER-2.00
913W-WALL VASE-2.00



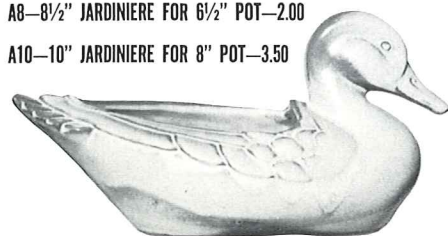
838-10 OZ. PITCHER-1.25



A8-8 1/2" JARDINIERE FOR 6 1/2" POT-2.00



228-7 1/2" SWAN-2.50



208-11" MALLARD PLANTER-4.50

A10-10" JARDINIERE FOR 8" POT-3.50



833-24 OZ.-1.50



8-24 OZ.-1.50



835-24 OZ.-1.50



831-16 OZ.-1.50

ASH TRAYS AND ACCESSORIES



512



513

MINIATURE TRAYS 3" TO 4"—1.00 EACH



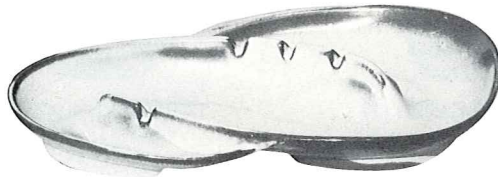
463



477



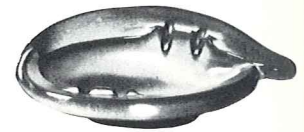
474—4" ROUND—1.00



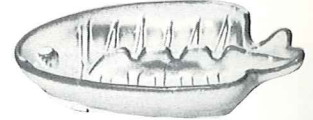
F203—13½" TEAR DROP—3.50



170—4½" TURTLE PAPER WEIGHT—1.00



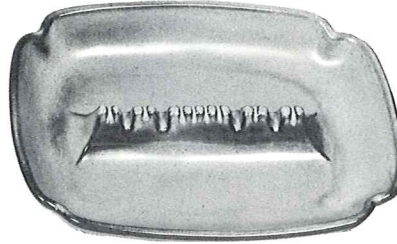
452—7" FREE FORM—2.00



T8—7" FISH—1.50



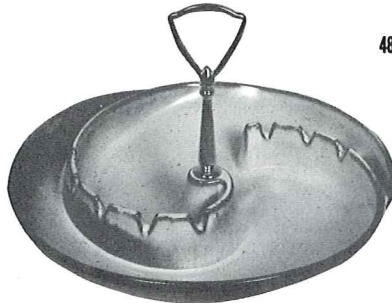
469—SAFETY ASHTRAY—1.00



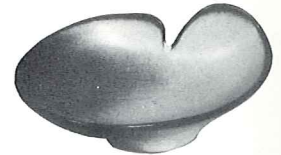
489—10" ASH TRAY WITH SAFETY REST—3.00



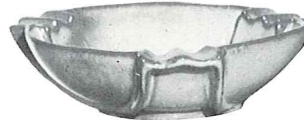
223—6" CLOVER LEAF—1.25



30T—10" ROUND ASH TRAY—4.50
30—WITHOUT HANDLE—3.50



466—7" FREE FORM—1.50

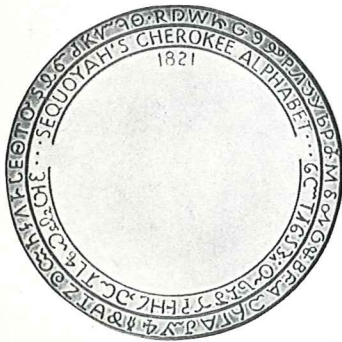


458—7" THREE SIDED—2.00



453—7" ARROW HEAD—1.50

ABOVE ITEMS AVAILABLE IN ALL COLORS—ADD 50% FOR FLAME



7FS—8¼" CHEROKEE ALPHABET PLATE—2.50



466R—ROAD RUNNER ASH TRAY—1.50



CIR—ROAD RUNNER MUG—1.50

WHAT'S YOUR SIGN?

Astrology is but a heavenly language. A vocabulary like music and art that leads, not compels; and helps us to understand each other better.



ZTR—6" ZODIAC TRIVET—1.50



488—7" ZODIAC ASH TRAY OR BOWL—1.50

Made only in Green, Gold, White and Flame

Add 50% for Flame

SIZES ARE APPROXIMATE AND MAY VARY SLIGHTLY



WESTWIND PATTERN pictured in Peach Glow. (See page 15 for listing of additional pieces and colors available in this pattern.)



LAZYPONES PATTERN pictured in Brown Satin. (See page 17 for listing of additional pieces and colors available in this pattern.)

Mayan-Aztec Cannister Set — 20.00 boxed

Pictured in Woodland Moss Color

These Crafted Kits
Made in A
Add 50% f

26DC—3 Oz.
26D—1 Qt. P
91—Baking-



24F — Flour, Cookies,
Corn Meal — 6.50

24S — Sugar — 6.00

24C — Coffee — 5.00

24T Tea — 4.00

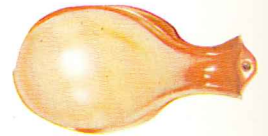


83 — 12" Division Relish Dish — 3.50

7PS — 9" Tray — 1.50
7CL — 8 oz. Mug — 1.50



7D — 2 qt. Pitcher — 4.00



4Y — Spoon Holder
1.00



24H — Salt & Pepper — 2.50 pair
24G — Grease — 3.50 each
4 pc. Range Set — 6.00 boxed

Pictured in Prairie Green



25H — Salt & Pepper — 2.50 pair
25G — Grease — 3.00
4 pc. Range Set — 5.50 boxed



25T — Tea — 3.50



25C — Coffee — 4.50



25S — Sugar — 5.00



25F Flour, Cookies, Corn Meal — 5.50

4 pc Set Boxed — \$18.50



7TR — Cherokee Alphabet



ZTR—Zodiac Trivet



OK3—5 Civilized Tribes Trivet

Made only in Green, Gold, White and Flame.
1.50 each



5TL—12 Cup Teapot—5.00



WA1
Warmer
3.00

4W — 3 qt. Baker — 6.00



3 TR—Spanish Iron



94TRC — Cattle Brand



94TRH — Horse Shoe

6" Felted Trivets—1.50



94TR — Rooster



5LC — 6 oz. Juice
1.00 each

8I — 1 qt. Pitcher — 2.50

9I — Baking — Tray — 2.50

Then Accessories

All Colors for Flame

Juice—1.00
Pitcher—2.50
Tray—2.50



Ringed Cannister Set — 18.50, boxed



26T — Tea — 3.50



26C — Coffee — 4.50



26S — Sugar — 5.00



26F — Flour, Cookies,
Corn Meal — 5.50

Pictured in
Desert Gold



818 — Chip & Dip, with Ball Bearing Base
Regular colors — 7.50
Flame as shown — 11.00



80 — qt. Pitcher — 4.00



4D — 2 qt. Pitcher — 4.00



26H — Salt & Pepper — 2.50 pair
26G — Grease — 3.00 each
4 pc. Range Set — 5.50, boxed

Demitasse — Miniatures — 1.00 each



IT — Toothpick



IC — Cup



IB — Sugar



IA — Cream



4SC — 11 oz.
Soup Cup — 1.50



819—12" EGG PLATE—5.00



FD—1½ Qt. COVERED FONDUE DISH—\$6.00
WA2—WARMER ONLY—\$3.00
SET INDIVIDUALLY BOXED—\$9.00



4—Sugar
1.00 each



553—Creamer
1.00 each



26LC
6 Oz. Tumbler
1.50



C-13—Gold



1.50 each
C-12—Moss



C1 — White



C2 — Brown



C3 — Gold



C4 — Green



C5 — Moss



C6 — Flame

Mugs boxed 4 to a box, if requested.



82 — 6 cup Carafe — 5.00
82W — Warmer — 2.00
82 Set — 7.00
(For Flame as shown add
50% to above Prices)



C7 — Flame



C9 — Peach



C8 — Gold



C10 — Flame



C11 — Black



7CL — Green

MUGS: for coffee, tea, milk, chocolate, soup, soda, or — You name it! Each available in any of the above colors. Sized 8-11 oz. In Flame, \$2.25 each; in any other color \$1.50 each.

Westwind

PATTERN

AVAILABLE ONLY IN: Peach Glow, Woodland Moss, Prairie Green and White Sand.



6LS-45 PC. SERVICE SET, BOXED—\$59.50

- 8—Cups
- 8—Saucers
- 8—14 Oz. Bowls
- 8—7" Plates
- 8—10" Plates
- 1—13" Platter
- 1—Creamer
- 1—Sugar
- 1—Sugar Lid
- 1—Serving Bowl

(Open Stock Price—\$68.20)

6TS-20 PC. STARTER SET, BOXED—\$26.50

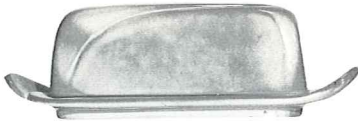
- 4—Cups
 - 4—Saucers
 - 4—7" B & B Plates
 - 4—10" Plates
 - 4—14 Oz. Chili-Soup Bowls
- (Open Stock Price—\$29.60)

SIMPLICITY in its truest form — that's "Westwind." The carefully broken line of the shallow coupe shape is the key to the pattern. The simple unbroken line of the cup handle, with its broad thumb rest, combines grace and security.

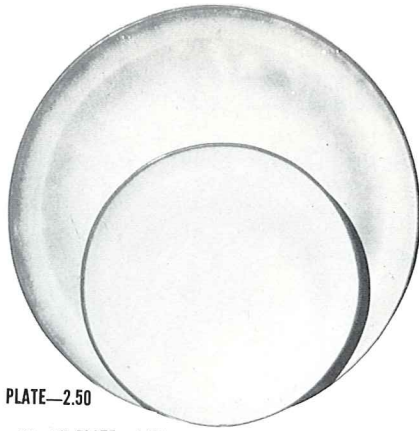
The large and small open bakers have rolled rims for safety and ease of handling. Cleaning is no task. Much care is exercised in making these "easy-grip" knobs on the lids. This oven-to-table pottery is truly the gourmet's delight.

The homemaker today appreciates the warm, cordial earthen colors in this unique pottery. Its waxy textures are so lovely to the touch. Such tableware should be selected for its artistic qualities as well as its serviceability.

"Westwind," with its basic simple lines, permits freedom in expression of personality which is so important in smart contemporary homes. You'll LOVE "Westwind" —and, of course, it is all ovenproof.



*4K—BUTTER DISH—2.50



6F—10" PLATE—2.50

6G—7" PLATE—1.25



*6B—SUGAR WITH LID—2.00



*6A—9 OZ. CREAMER—1.50

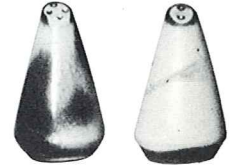


*6VT—2½ QT. TUREEN—6.00



6C—CUP—1.20

6E—5" WELLED SAUCER—1.20



*6H—SALT & PEPPER—2.00



*6V—2½ QT. BAKER—6.00



*5LC—6 OZ. JUICE—1.00



*5L—12 OZ. TUMBLER—1.20



*81—1 QT. PITCHER—2.50



*80—2 QT. PITCHER—4.00



*6T—6 CUP TEAPOT—3.50



*6VS—1½ QT. BAKER—4.50



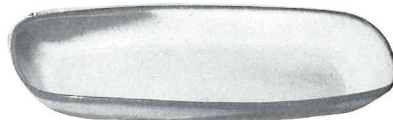
*6J—2 CUP TEAPOT—2.50



*6S—TWO SPOUT GRAVY—2.50



*6U—18 OZ. BAKER FOR TWO—3.00
A COVERED CANDY DISH



*5QS—13" STEAK PLATE (SHALLOW PLATTER)—2.50

*6P—11" STEAK PLATE—2.00

*5PS—9" TRAY—1.50



6X—14 OZ. CHILI SOUP—1.25

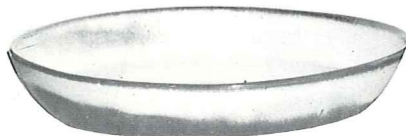
6XS—10 OZ. FRUIT—1.00



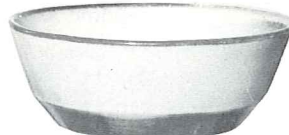
*BP—6 OZ. BEAN POT
OR CUSTARD—1.00



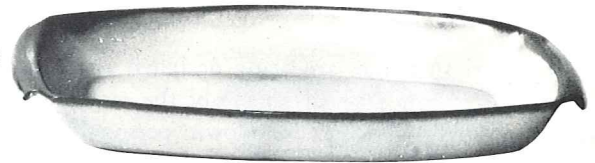
*BP—6 OZ. BEAN POT
OR CUSTARD/WITH LID—1.75



*91—10" BAKING DISH—2.50

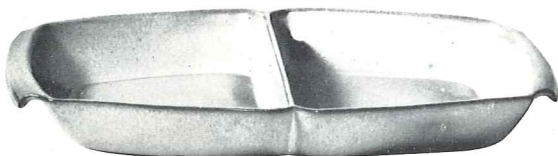


*6N—1 QT. BOWL—2.00

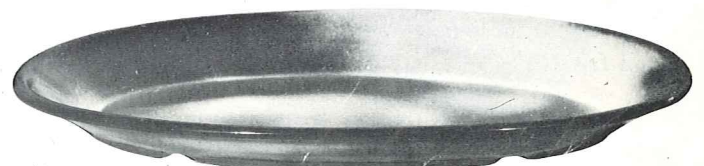


5P—17" DEEP PLATTER—7.50

5Q—13" DEEP PLATTER—3.50



5QD—13" DIVIDED BOWL—3.50



TP—17" OVAL PLATTER—7.50

THIS PAGE AVAILABLE IN PEACH GLOW, PRAIRIE GREEN, WOODLAND MOSS AND WHITE SAND EXCEPT WHERE NOTED *

* AVAILABLE IN ALL COLORS—ADD 50% FOR FLAME

SIZES ARE APPROXIMATE AND MAY VARY SLIGHTLY.

LAZYBONES Pattern

AVAILABLE ONLY IN: Brown Satin, Desert Gold, Peach Glow, Prairie Green.



4LS-45 PC. SERVICE SET, BOXED—\$59.50

- 8—Cups
- 8—Saucers
- 8—14 Oz. Bowls
- 8—7" Plates
- 8—10" Plates
- 1—13" Platter
- 1—Creamer
- 1—Sugar
- 1—Sugar Lid
- 1—Serving Bowl

(Open Stock Price—\$69.70)

4TS-20 PC. STARTER SET, BOXED— \$26.50

- 4—Cups
- 4—Saucers
- 4—7" B & B Plates
- 4—10" Plates
- 4—14 Oz. Chili-Soup Bowls

(Open Stock Price—\$30.60)

Our American homes are being designed and built so that home makers can take advantage of the many modern conveniences, yet develop their own personalities in color and styling.

The furnishings for these contemporary homes are practical and simplified. They must be selected carefully to preserve a cordial atmosphere, which we all wish for our family and friends.

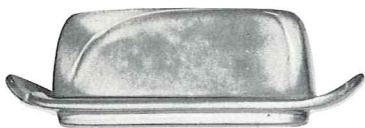
Frankoma was sensitive to these trends when this new dinnerware was being designed. The atmosphere surrounding LAZYBONES is relaxing, for you are influenced by its free flowing sculptured lines. As you accept the invitation to handle and caress each piece, you will love the way

they fit the contour of your hands, for immediately they become a part of you.

Food cooked in Lazybones can go from the oven to the table—and there are so many uses for each piece. They are designed to serve!

Notice the array of Frankoma's colors. They are the gourmet's delight, for they all compliment your food and share in making every meal an occasion. The shapes themselves are both practical and beautiful.

When you set your table with Lazybones, you are set to relax, and enjoy your share of casual living. It will be the "Talk of the Table" with your family and friends.



*4K—BUTTER DISH—2.50



4F—10" PLATE—2.50

4G—7" PLATE—1.25

4E—5" SAUCER—1.20



5CC—5 OZ. TEACUP—1.20



*4X—14 OZ. CEREAL—1.50



*5L—12 OZ. TUMBLER—1.20



*5LC—6 OZ. JUICE—1.00



4C—CUP—1.20



*4Y—6" SPOON HOLDER—1.00



4H—SALT & PEPPER—1.75



4A—8 OZ. CREAMER—1.50



4B—SUGAR WITH LID—2.00



*4M—18 OZ. MUG—1.80



4Z—6" SOUP—1.25



4V—2 QT. BAKER/BEAN POT—4.50



4P—13" PLATTER—3.50



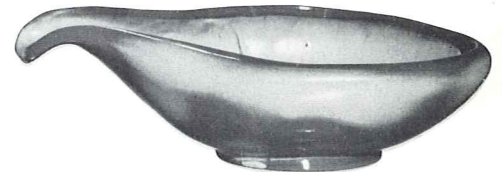
*4N—24 OZ. VEGETABLE—1.50



4W—3 QT. BAKER/BEAN POT—6.00



4QD—11" DIVIDED BOWL—3.50



*214—12" SERVICE BOWL—2.50



*201—9" BOWL—2.00



*BP—6 OZ. BEAN POT OR CUSTARD/WITH LID—1.75



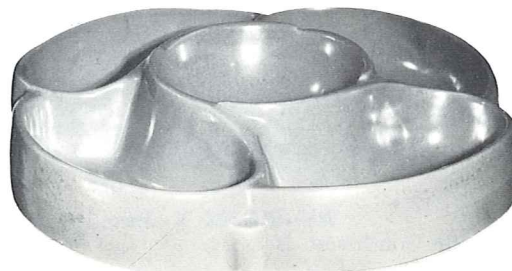
*BP—6 OZ. BEAN POT OR CUSTARD—1.00



*4SC—11 OZ. SOUP CUP—1.50



4XL—24 OZ. SALAD OR GUMBO—1.50



*818—5 SECTION LAZY SUZETTE ON BALL BEARING BASE—12"—7.50



*4D—2 QT. PITCHER—4.00

WAGON WHEELS Pattern

AVAILABLE ONLY IN: Desert Gold and Prairie Green.



94LS—45 PC. SERVICE SET, BOXED—\$59.50

- 8—Cups
- 8—Saucers
- 8—14 Oz. Bowls
- 8—7" Plates
- 8—10" Plates
- 1—13" Platter
- 1—Creamer
- 1—Sugar
- 1—Sugar Lid
- 1—Serving Bowl

(Open Stock Price—\$68.20)

THE ROMANCE OF THE WEST lives on with our WAGON WHEEL Pottery! The pitchers are quaint and practical. The cup is the hub of a wheel, and the "good luck" horseshoe makes the handles for the baker. There are bands of cattle brands on the platters and bowls. The whole set is an application of the fine designs one can find on any ranch.

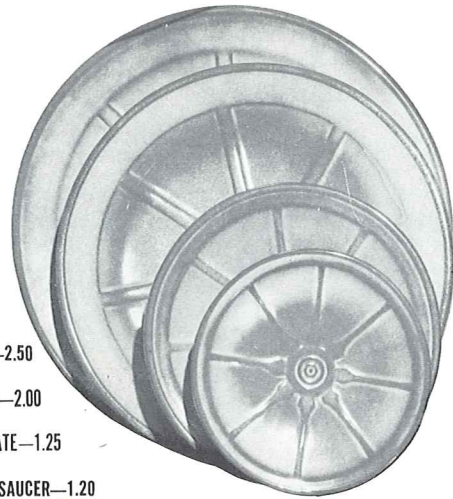
A most colorful part of the history of the Southwest is the cattle industry, and the rancher's "coat of arms" is his "cattle-brand." The covered wagon, "wagon wheels," horses, the cowboys, cattle, the "little dogies," and above all, the "cattle-brand" are symbols of this natural industry.

94TS—20 PC. STARTER SET, BOXED \$26.50

- 4—Cups
 - 4—Saucers
 - 4—7" B & B Plates
 - 4—10" Plates
 - 4—14 Oz. Chili-Soup Bowls
- (Open Stock Price—\$29.60)

Many of these brands are fine designs, and most of them have a definite meaning. Some are the initials of the owner, others may refer to hills on the ranch, the number of acres he owns, the number in the family, his monogram, key, a hat, or any one of a thousand items of interest. Each brand is usually registered in the county in which it is used.

We are proud to take this opportunity to eulogize these pioneers of the Southwest, and include a number of these brands in decorating some of the pieces of our WAGON WHEEL set. Every piece is oven-proof.



94FL-10" PLATE-2.50

94F-9" PLATE-2.00

94G-7" PLATE-1.25

94E-5" SAUCER-1.20



94H-SALT & PEPPER-2.00



94M-16 OZ. MUG-1.80



94B-SUGAR WITH LID-2.00



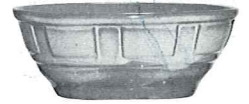
94A-8 OZ. CREAMER-1.50



94C-5 OZ. CUP-1.20



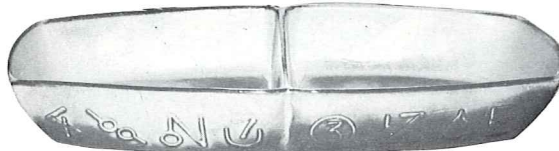
94XL-20 OZ. BOWL-1.50



94X-14 OZ. CEREAL-1.25



94V-2 QT. BAKER/BEAN POT-4.50



94QD-13" DIVIDED BOWL-3.50



94L-12 OZ. TUMBLER-1.20



94XO-6 OZ. DESSERT-1.00



94W-3 QT. BAKER/BEAN POT-6.00



94Q-13" PLATTER-3.50



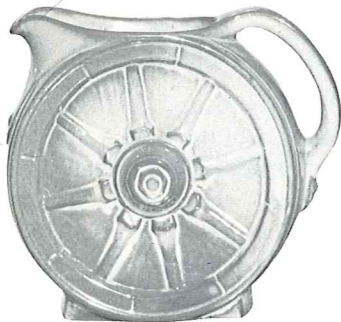
94N-1 QT. VEGETABLE BOWL-2.00



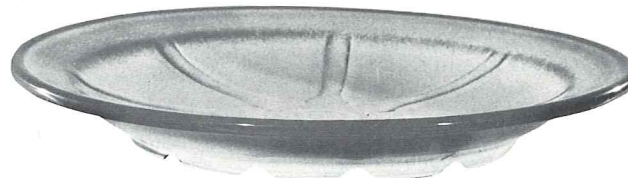
94P-17" PLATTER-7.50



94J-2 CUP TEAPOT-2.50



94D-2 QT. PITCHER-4.00



94FC-15" CHOP PLATE-10.00



94T-6 CUP TEAPOT-3.50

Plainsman Pattern

AVAILABLE ONLY IN: Woodland Moss, Desert Gold, Brown Satin and Prairie Green.



5LS-45 PC. SERVICE SET, BOXED—\$59.50

- | | |
|----------------|----------------|
| 8—Cups | 1—13" Platter |
| 8—Saucers | 1—Creamer |
| 8—14 Oz. Bowls | 1—Sugar |
| 8—7" Plates | 1—Sugar Lid |
| 8—10" Plates | 1—Serving Bowl |
- (Open Stock Price—\$68.70)

For thousands of years men have gloried in creating "atmosphere" around their favorite sport — eating. Harmonious and beautiful surroundings not only add to the pleasure of eating but make it a healthier pastime. We still lavish all we possibly can on our banquets and feasts, for we love to eat.

Men have always managed to devise some sort of receptacle to hold food, either raw or prepared, and the quality and value of his utensils depend more on his love of beauty and ability to create than the size of his purse. Of the many materials used throughout the centuries, in all countries of the world — iron, copper, brass, stone, wood, silver, and even gold, ceramics has remained the favorite of all eating vessels. Since the acceptance of "whiteware" in the sixteenth century, most fine tables have been set with "dinnerware" or "china." This is sometimes a white earthenware, or a compounded china body, or even a translucent true porcelain. Its quality depends on the selec-

5TS-20 PC. STARTER SET, BOXED—\$26.50

- | |
|---------------------------|
| 4—Cups |
| 4—Saucers |
| 4—7" B & B Plates |
| 4—10" Plates |
| 4—14 Oz. Chili-Soup Bowls |
- (Open Stock Price—\$29.60)

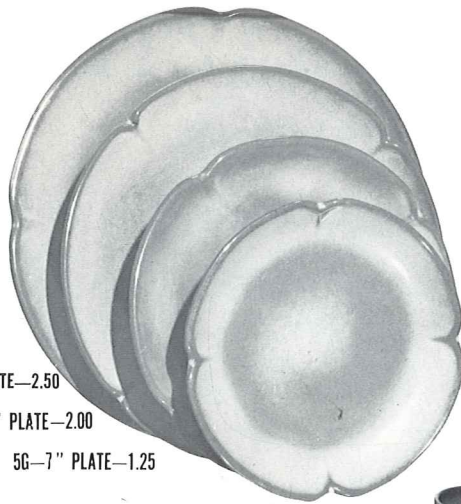
tion and handling of the materials plus its Art value expressed in line, form and color.

Today, from the crudest earthenware to the finest porcelain, we still choose CERAMICS of some kind for our table. Although we would not eliminate "whitewares," we love our modern pottery tableware. Why not? It is gay, happy, and colorful, and surely fits into our modern mode of living. It is with this in mind that we have created FRANKOMA TABLEWARE.

For one design we have gone to the Great Plains of the Southwest and offer you the "PLAINSMAN" pattern. Its well chosen, simple lines and sturdy shapes create an atmosphere benefitting its heritage. It is most appropriate "for fun or fashion." Every piece is oven-proof.



5V-2 QT. BAKER/BEAN POT-4.50



5F-10" PLATE-2.50

5FS-9" PLATE-2.00

5G-7" PLATE-1.25



*5DC-DEMITASSE CUP-1.00

*5DE-DEMITASSE SAUCER-1.00



*5A-12 OZ. CREAMER-1.50



*5CL-12 OZ. MUG-1.50



*5B-SUGAR WITH LID-2.00



5W-3 QT. BAKER/BEAN POT-6.00



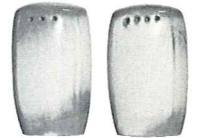
*5NS-9" VEGETABLE-2.50



5CC-5 OZ. TEACUP-1.20



5C-CUP-1.20



*5HS-SALT & PEPPER-2.00



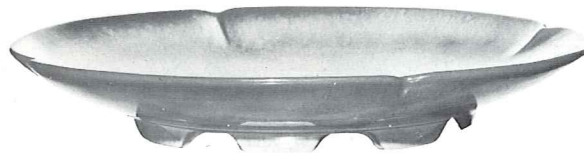
5M-16 OZ. MUG-1.80



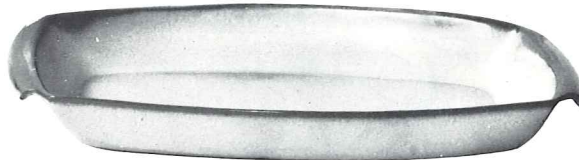
*5L-12 OZ. TUMBLER-1.20



*5N-4 1/2 QT. BOWL-7.50



5FC-15" CHOP PLATE-10.00



5P-17" PLATTER-7.50

5Q-13" PLATTER-3.50



*5DB-6 OZ. SUGAR-1.25



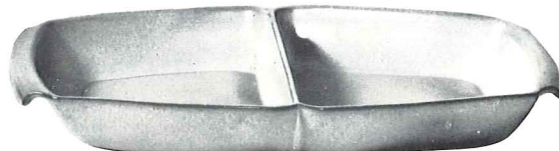
*5DA-6 OZ. CREAMER-1.25



5XL-20 OZ. BOWL-1.50

5X-14 OZ. CEREAL-1.25

5XS-9 OZ. FRUIT-1.00



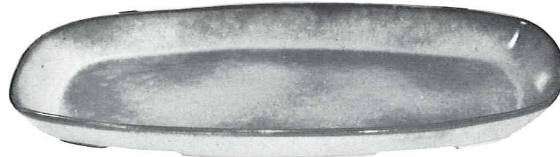
5QD-13" DIVIDED BOWL-3.50



5TL-12 CUP TEAPOT-5.00



*218-12" BOWL-3.50



*5QS-13" PLATTER-2.50

*5PS-9" TRAY-1.50



5S-20 OZ. GRAVY BOAT-2.50



*6T-6 CUP TEAPOT-3.50



*6J-2 CUP TEAPOT-2.50



5D-3 QT. PITCHER-5.00

THIS PAGE AVAILABLE IN BROWN SATIN, DESERT GOLD, PRAIRIE GREEN & WOODLAND MOSS, EXCEPT WHERE NOTED*.

* AVAILABLE IN ALL COLORS-ADD 50% FOR FLAME

SIZES ARE APPROXIMATE AND MAY VARY SLIGHTLY.

MAYAN-AZTEC Pattern

AVAILABLE ONLY IN: Desert Gold, Prairie Green, White Sand and Woodland Moss.

7LS-45 PC. SERVICE SET, BOXED—\$59.50

- 8—Cups
- 8—Saucers
- 8—14 Oz. Bowls
- 8—7" B & B Plates
- 8—10" Plates
- 1—13" Platter
- 1—Creamer
- 1—Sugar
- 1—Sugar Lid
- 1—Serving Bowl

(Open Stock Price—\$68.20)



7TS-20 PC. STARTER SET, BOXED—\$26.50

- 4—Cups
 - 4—Saucers
 - 4—7" B & B Plates
 - 4—10" Plates
 - 4—14 Oz. Chili-Soup Bowls
- (Open Stock Price—\$29.60)

1,000 YEARS before Columbus "discovered" America, there flourished a civilization in this country whose artistic, social, and religious standards far surpassed any European peoples up to that time. Many archeologists not only compare the art and architecture of the Mayans and Aztecs favorably with that of ancient Egypt, but in many respects prefer their achievements in art importance. THESE were the FIRST Americans.

It is well established that the nucleus of American Indian tribes spread from the Great Southwest region. Our particular interest is in those who went South—the Mayans and Aztecs. They have given to the world some of its richest art treasures. The "golden age" of Mayan Art, in which they developed their pantheon, built their temples, perfected their Arts, social structure and government, occupied the first few centuries after Christ.

The Great Temple in Copan, Yucatan, built to the War Diety, was completed just before the Spanish invasion. The temple compound covered almost a quarter square mile, comprising seventy-eight buildings — a most stupendous achievement and a monument to architectural beauty.

The most widely known of the Mayan and Aztec arts are the numerous hieroglyphs. They were used profusely on buildings, altars, monuments, and other such places, not only for embellishments, but for the recording of information. The decorations on the stairway of Copan alone were composed of over 2,500 different glyphs. Freehand methods prevailed entirely, for their art was their only written language.

Pottery has always evidenced every strata of culture. Fragments of pottery have been found where all other records have been destroyed, even in prehistoric times. Throughout the long history of all Indian tribes, pottery has been the universal art. The pottery of the ancient Southwestern Indians challenges comparison in color, form, and mastery of line with that of the Greek and Orientals.

It is through the inspiration of this wealth of beauty that FRANKOMA has created its Mayan-Aztec tableware.



7V—2 QT. BAKER/BEAN POT—4.50



7FL—10" PLATE—2.50

7F—9" PLATE—2.00

7G—7" PLATE—1.25

7E—5" SAUCER—1.20



7D—2 QT. PITCHER—4.00



7W—3 QT. BAKER/BEAN POT—6.00



7B—SUGAR WITH LID—2.00



7A—6 OZ. CREAMER—1.50



7C—CUP—1.20



7M—14 OZ. MUG—1.80



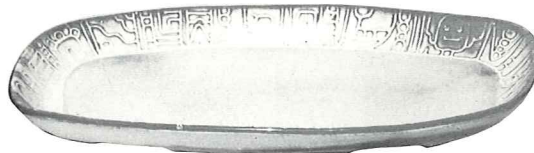
7CL—8 oz. MUG—1.50



7XO—8 OZ. FRUIT—1.00



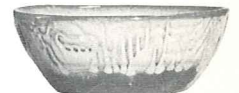
7U—10 OZ. BAKER—2.00



7QS—13" STEAK PLATTER (SHALLOW PLATTER)—2.50



7HS—SALT & PEPPER—2.00



7X—14 OZ. CHILI-SOUP—1.25



7K—BUTTER DISH—2.50



7Q—13" DEEP PLATTER—3.50



7XL—20 OZ. SALAD—1.50



7PS—9" TRAY—1.50



7FC—15" CHOP PLATE—10.00



7N—1 QT. VEGETABLE BOWL—2.00



7T—6 CUP TEAPOT—3.50



7P—17" AZTEC OVAL PLATTER—7.50



7I—2 CUP TEAPOT—2.50



Not available



Not available



Not available



Not available



Available in 1972

The original "Elephant Mug" was created for the National Republican Womens Clubs and copyrighted by Frankoma in 1969 and patented in 1970. Now each year this mug is produced by Frankoma as a stock item. The current mug is only available during that year — no back numbers are available at the plant. Each year the color is different.

© F.P. 1969, U.S. Pat. No. D214,868

5 oz. coffee mug \$2.50 each

Available only through Frankoma Accounts, Retail Shop at Plant and Republican Womens Clubs.



Pictured is a 12" bottle vase, the fourth in a series of "limited edition" pieces. The mold is signed by the artist, John Frank, and will be destroyed after 5,000 impressions. Each piece is numbered, and no "seconds" will be sold. Made only in the special gloss black and terra cotta. Available only through Frankoma Pottery dealers, and the Retail Showroom at the plant.

No. V4 \$10.00 each



There has been much said during the last few years about "lead poisoning" from using pottery dishes and containers. Shown here is the Official Seal of Certification, that this ware is ALL safe from lead poisoning. • Practically all pottery wares made in the U.S. are so certified, so . . .

Buy Frankoma!
Be Safe • Buy American

You can dress FRANKOMA "up or down," for it is both useful and beautiful, whatever the occasion. All the extra serving pieces, as well as the centerpiece and accessories, are made to match in color and texture, and they are ovenproof.

Frankoma is ovenproof but does not claim to be flameproof. You will find it very durable and serviceable wherever china or pottery can be used. It is designed to be entirely satisfactory and we would appreciate letting the factory know of any deviation from this standard.

You are a welcomed guest at the factory any time. Should you come during working hours, we will be glad to conduct you through the plant to see Frankoma made. • Prices subject to change without notice.

Prices shown are retail.

PRICES MAY VARY EAST AND WEST

Frankoma Pottery, Inc.

— On Frankoma Road —

P. O. Box 789 • 918-224-5511

Sapulpa, Oklahoma 74066

FRONT COVER

Pictured on the front cover is Joniece Frank, Ceramic Artist, modelling one of the pieces for our new line of Fine Sculpture. Ask for our catalog supplement of Sculpture.